



Band 4 Wrist Warmers

Design: Anne Bruvold

The pattern may not be used for commercial production without permission

This pattern might seem a bit extensive, but this is how I make wrist warmers. If you have made a lot of beaded wrist warmers already, feel free to string the beads, cast on 34 stitches and jump to the diagram. The result might not be exactly as mine. Else: read through the pattern before starting.



You'll need

- Yarn:
- Rauma Inca Alpakka or similar in the colour you want
 - A tight spun yarn in a contrasting colour for casting on, about 1 m is needed
 - A short piece sewing thread

Needles 2.5 mm

Crochet needle 3/3.5 mm

A thin needle for stringing beads

A darning needle

Beads	Colour (see diagram)	Number needed
	Black	820

Preparations

- Cut a piece of sewing thread and thread it on the sewing needle thin enough for stringing the beads.
- Make a 3-4 cm large loop of sewing thread.
- Thread the yarn through the loop.

String the beads on the needle and pull them over on the yarn.

Beads of one colour

If you are using beads of one colour, just count the number, and add some extra.

Beads in two or more colours

If you are using beads of two or more colours, string them in the opposite way as when knitting. The first bead stringed is the last to be knitted.

Casting on

With the tight spun contrast colour yarn and crochet hook, chain 38. Finish in a way that makes you able to unravel later.

Using the yarn pick up 34 sts in the bumps on the back side of the chains (skipping the two first). First row to be knitted is a beaded row.

Alternatively, cast on 34 stitches in your preferred method and knit one row. Next row is a beaded row.

Knitting

Beaded row (uneven numbered rows): slip 1, knit 33 at the same time as you slide the beads in between the stitches according to the diagram. The stitches are the edges of the squares and the beads should be at the far side of the work.

Knitted rows (even numbered rows): Knit 34.

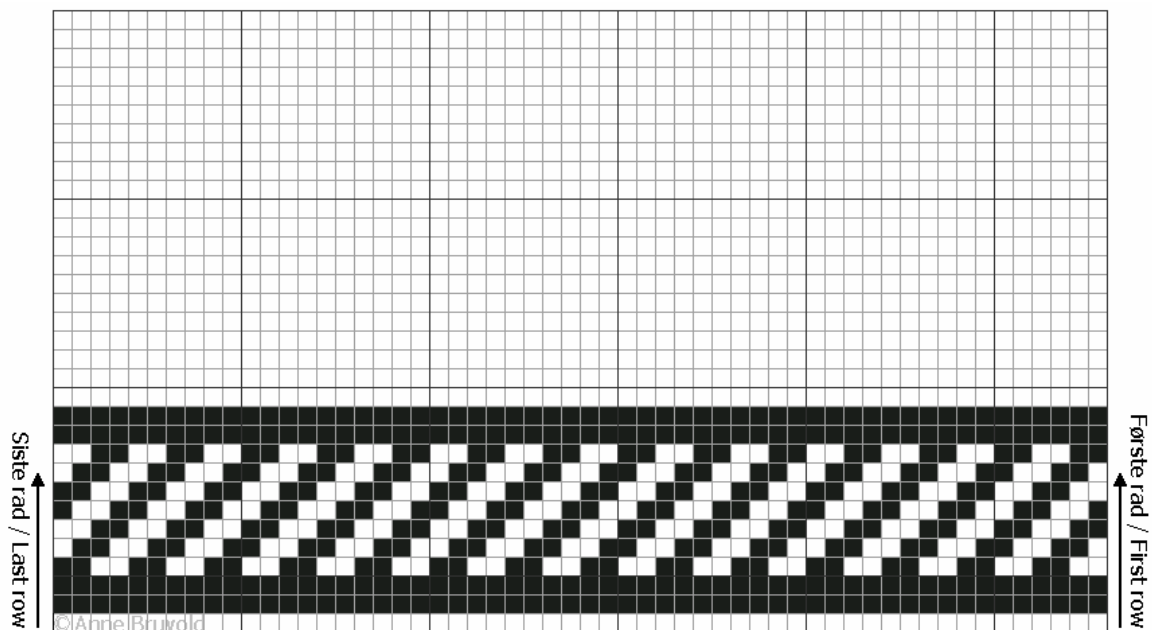
Repeat by alternating between beaded rows and knitted rows, until the diagram is finished. Stop just after the last beaded row, but do NOT cast off.

Fixing stringing errors

If you during knitting find that you have made a mistake when threading the beads, leave enough yarn to finish the beaded row, cut it and correct the beads.

Finish the row, and switch back to the yarn from the ball when starting the next all knit row. Tuck away the ends when the wrist warmer is finished.

Diagram for beaded pattern



Finishing

Leave a yarn length equal to 3 times the width of the wrist warmer before cutting. This part is to be used for grafting.

Hold the work in a cylinder shape with beads facing out. Graft together first and last beaded rows, making sure not to thread the grafting needle through the crocheted chain.

Tighten the stitches enough to make the distance between the first and last beaded row similar to the distance between beaded rows elsewhere. Also make sure that the beaded pattern ends in line when going between first and last row (which you usually will not see before you get close to the other side).

Open the crocheted chain and unravel it.

If you started by casting on using the yarn, use graft the last row just under the first beaded row, minimizing the gap between the first and last beaded row. Again you need to tighten the stitches to make the distance between beaded rows constant, and sure that the beaded pattern ends in line when going between first and last row.

Tuck away the ends as invisible as possible, and start using the wrist warmers – or give them to someone in need of wrist warmers 😊